



Bayfront Advisory Commission Newsletter

City Council Appointed Advisory Board

Members

- Kal Kassir,
Chairman
- Scott Ayers
- Joseph Bovee
- Norman W. Carrick
- Faith Christie
- Charles G. Faison,
Jr.
- Capt. Frank
Hughlett
- Louis R. Jones,
Councilman
- Charles R. Malbon,
Jr.
- Joseph A. Miller
- Stacey S. Patrick
- David S. Redmond
- Martin A. Thomas
- Robert Thornton
- Bruce Widener
- James L. Wood,
Councilman

Bayfront Advisory Commission to Meet June 18, 2015

The Bayfront Advisory Commission will meet June 18, 2015, at the Resort and Conference Center, 2800 Shore Drive. The Commission will meet from 3:30pm-5:30pm.

Agenda

CALL TO ORDER

Welcome and Introductions - Kal Kassir, Chair

CHAIRMAN'S REPORT

Comments from Kal Kassir, Chair
Review and Approval of Minutes from past meeting(s).

STAFF REPORTS & UPDATES

Zoning Inspections updates
Current Planning updates

COMMITTEE REPORTS & UPDATES

Design – Joe Bovee
Communications - Scott Ayers
Public Safety, Transit, Parking &
Pedestrian Access – Charles Malbon

COMMUNITY REPORTS & UPDATES

NEW BUSINESS

OLD BUSINESS

PROJECT BRIEFINGS, OPEN DISCUSSION & COMMENTS FROM PUBLIC

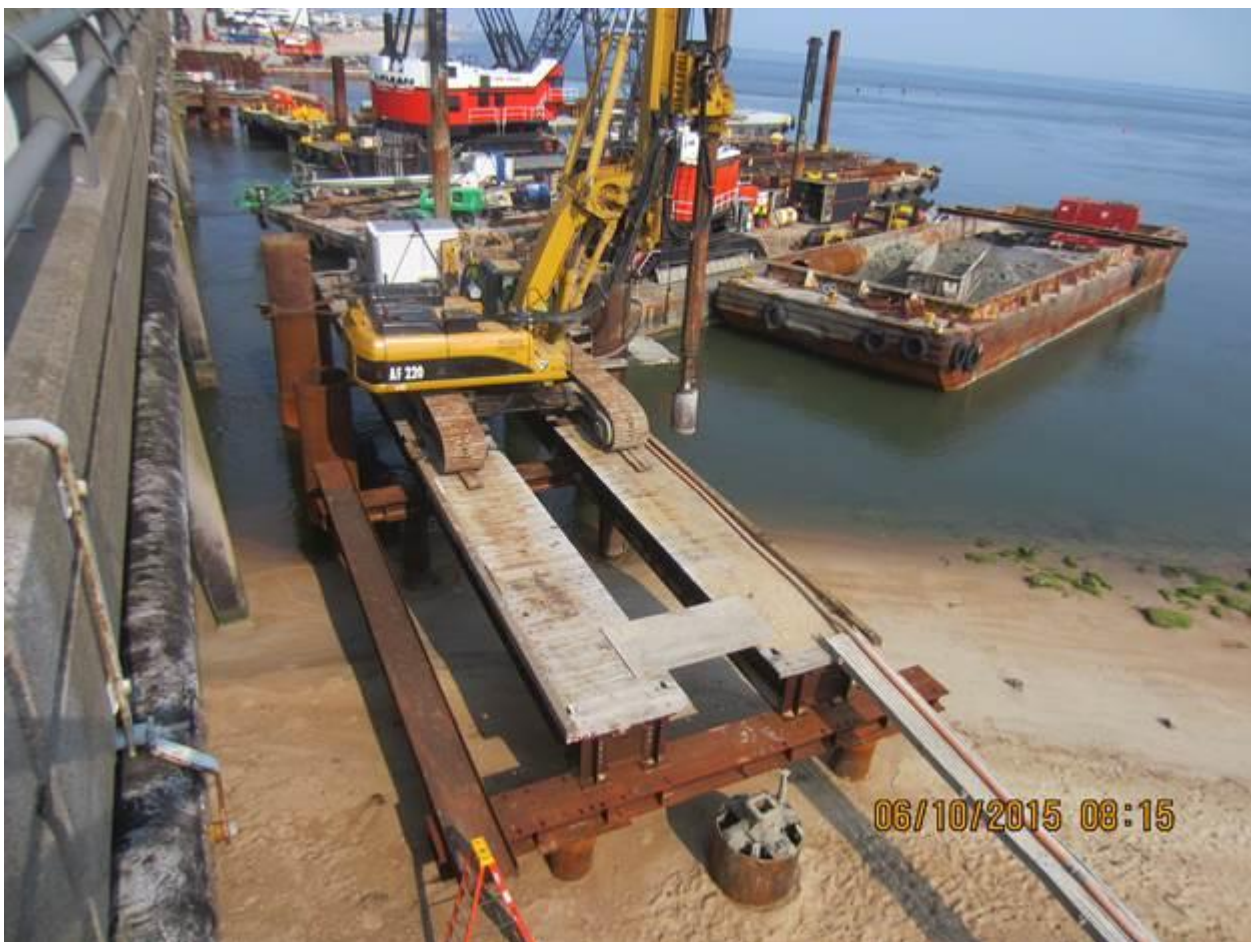
Public Comment Period
Donnie Edwards to comment on Farmers' Market

ADJOURN

Wojo's World

"Ah, summer, what power you have to make us suffer and like it" – Russell Baker

The heat is on – and not just the temperature. With lost work days during this past winter McLean Contracting is re-sequencing work, adding more resources to the project (can we fit any more cranes in the Lynnhaven?), and working weekends to make up for lost schedule. These efforts to make up schedule are certainly having a positive impact on the construction of the new westbound Lesner Bridge.



As the segment launcher (gantry crane) comes together between piers 1 and 2 of the new westbound bridge, the casting yard is preparing the completed bridge segments for shipment. A total of 49 of the 177 bridge segments have been cast and is enough to complete 3 of the 10 spans in the westbound bridge. The first bridge segment to be placed will be the expansion joint segment. This segment will be installed on Abutment "A" near 3556 On the Bay condominiums and will likely take place the first week of August 2015. Remember to check out the [Lesner Bridge Construction Sequence Animation](#) on YouTube!



Placement of Reinforcing Steel for the concrete cap at Pier 3

While the segment launcher is being assembled, crews will be busy placing the reinforcing steel for the concrete cap in Pier 3 which is expected to be poured this week. Additionally, Drilling crews have completed installing all of the drilled shafts for Piers 4 and 5 and are on track to complete the shafts for Pier 7 later this week before moving on to Pier 6. At the same time, a separate foundation crew has begun driving the steel pile foundation for Abutment B of the new westbound Lesner Bridge (next to the Point Chesapeake Property).



Placement of Reinforcing Steel for the concrete cap at Pier 3

Over the next two weeks, the bridge contractor will;

- Mobilize the utility barges and drilling equipment to Pier #6;
- Complete pile installation at Abutment B;
- Complete assembly of the second gantry crane at the Lynnhaven Dredge Material Storage Site;
- Continue casting segments for bridge span #4;

That's it for now. Keep Cool and Drive Safely!

-Chris

Christopher J. Wojtowicz, P.E.
Project Manager

Farmers' Market Rocks

The Shore Drive Farmers' Market opened last Saturday and by all reports it was a resounding success. Customers came by cars, trucks, bicycles and even by foot, and according to several merchants we talked to, spent and spent.

Nowhere was heard a discouraging word and all were looking forward to next week's market.

Should you like to pass on your comments please do so by addressing them to:

Donald Edwards [shoredrivefarmarket@gmail.com].

See you there!

How to Build a Bridge

In case you haven't seen it, the wonderful folks who inhabit Wojo's world have created an outstanding 3D animation of the bridge construction sequence. It is available at www.vbgov.com/lesner-bridge at the right side of the page under additional information. After watching it you will probably want to go out and buy your very own hard hat, construction boots and start to build. Oh, don't forget to add about 100 mil.

HELP! HELP! HELP! HELP! HELP!

If you know of a neighbor, an adjoining civic league or a business not receiving this newsletter, please email me at normcarrick@cox.net and I will correct the omission.
Thanks.

The Bayfront Vision Newsletter is now linked to “It’s a Shore Thing.” Reach “It’s a Shore Thing” at <http://itsashorethingvb.com/>.

For more information on the Bayfront Advisory Commission please visit <http://www.vbgov.com/government/departments/planning/Pages/home.aspx> Bayfront Advisory