

February-2011

**I. Traffic Signal Retiming Accomplished/Installed/Verified**

*Signal corridor retiming was accomplished along the following corridors:*

1. Northampton Boulevard
2. Birdneck Road
3. Princess Anne Road (upper region)
4. Independence Boulevard (North)

**II. Significant Meeting Hosted or Attended**

**1. February 24, 2011 Resort Advisory Commission (Transportation Subcommittee)**

*Public Works Project Management, Traffic Management Operations, and Traffic Engineering staff met with the Commission members to solicit their input on traffic signal pole designs to be used in the resort area.*

**2. February 8, 2011 Hampton Roads Transportation Operations (HRTTO) Group**

*This is a bi-monthly meeting of all the regional cities and counties to discuss ITS related technologies and the events that could be utilized within the Hampton Roads area.*

*The topics discussed at this meeting included:*

- A presentation on video collection of traffic volume and intersection turning movement count data
- Vendor proposal for a centralized regional web-based traffic count database
- A presentation on the pending VDOT Statewide RFP for Video Hosting

**III. Traffic Management Operations Division Response Information**

*Some of the vital statistics we address each month*

1. ***Number of Traffic Counts Scheduled/Completed – 7/7***
  - ***In addition, we collected turning movement counts at 14 intersections***
2. ***Number of Hits on the Traffic Data Database (at [www.VBgov.com/TCDS](http://www.VBgov.com/TCDS))***
  - ***258 hits for the month of February 2011***
  - ***2955 hits since program inception (July 2009)***
3. ***Number of Utility Locate Tickets (Miss Utility) Received/Checked/Marked – 2176/176/147***
4. ***Number of Traffic Signal Preventive Maintenance Actions completed – 50***
5. ***Number of Traffic Signal Work Orders Received - 146***
6. ***Number of Traffic Sign Work Orders Completed – 547***

# Traffic Signal Retiming Corridors

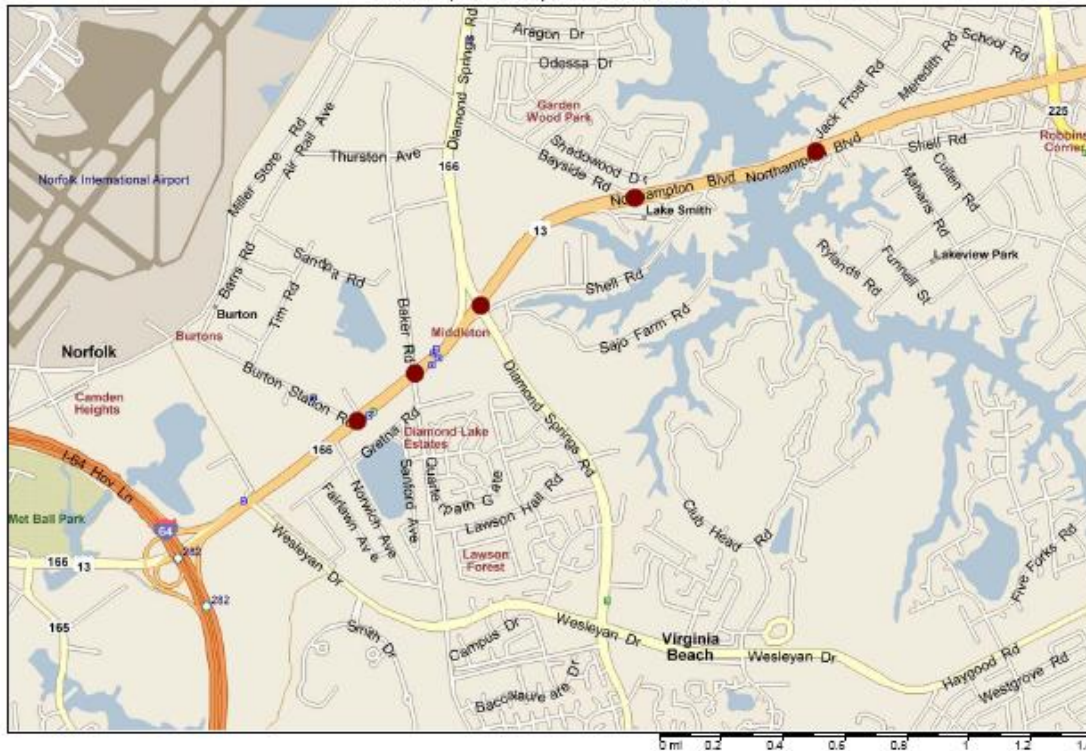
## *Northampton Boulevard Area Retiming Summary*

*Northampton Boulevard corridor is one of the busiest in the city, averaging between 44,200 to 63,200 vehicles per day.*

### Regional Collaboration

*Northampton Boulevard traverses the northern sectors of Norfolk and Virginia Beach. This retiming effort was coordinated with the City of Norfolk Smart Traffic Center in an effort to ensure efficient traffic flow across our common jurisdictional boundaries.*

Exhibit 2, Northampton Boulevard Area



Copyright © and (P) 1998-2008 Microsoft Corporation and/or its suppliers. All rights reserved. <http://www.microsoft.com/choice/>  
Certain mapping and direction data © 2008 NAVTEQ. All rights reserved. The Data for areas of Canada includes information taken with permission from Canadian authorities, including: © Her Majesty the Queen in Right of Canada, © Queen's Printer for Canada, NAVTEQ and NAVTEQ ON BOARD are trademarks of NAVTEQ. © 2008 Tele Atlas North America, Inc. All rights reserved. Tele Atlas and Tele Atlas North America are trademarks of Tele Atlas, Inc. © 2008 by Applied Geographic Systems. All rights reserved.

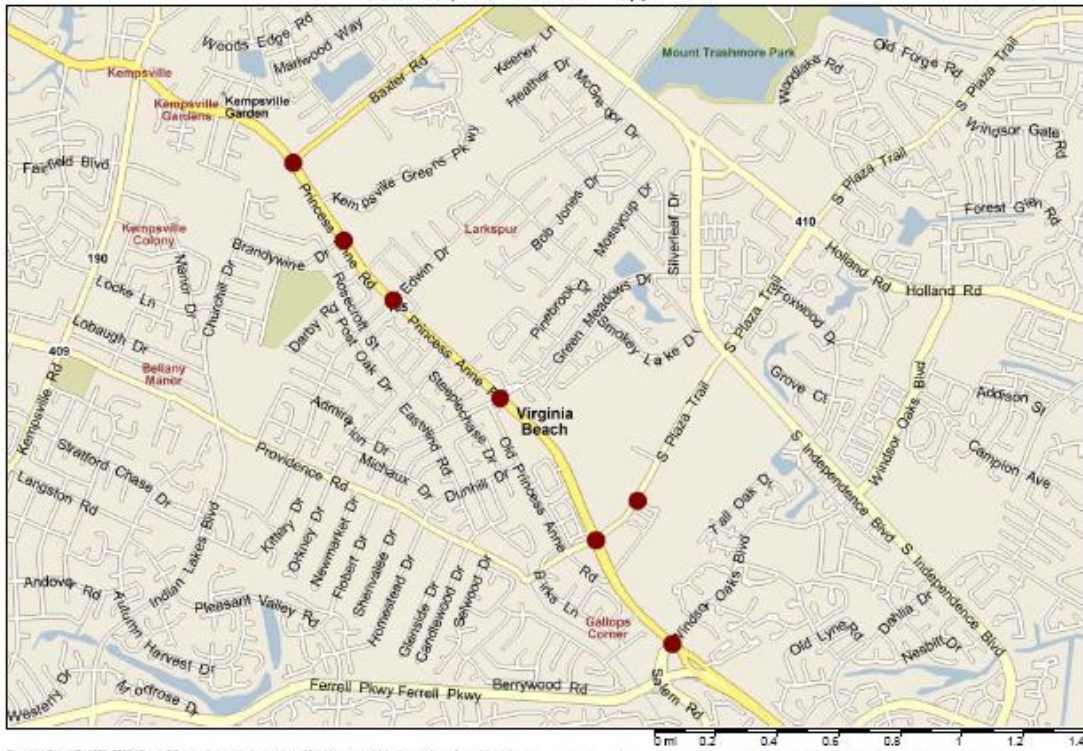
*The day plans and timing patterns for signals to the west on Princess Anne Road / Northampton Boulevard in the City of Norfolk were updated to provide for coordination with the Northampton Boulevard signals in the City of Virginia Beach*

*Along Princess Anne Road / Northampton Boulevard, travel time between both Kilmer Lane or I-64 Westbound Off-ramps and Diamond Springs Road decreased during all periods. For the AM and PM periods, between Kilmer Lane and Diamond Springs Road, in the eastbound direction, delay decreased 43 – 69%, saving drivers 1.8 – 2.2 minutes of travel time. In the westbound direction, delay decreased 33 – 82%, saving drivers between 1.1 – 2.1 minutes of travel time. For all other time periods, between I-64 Westbound Off-ramps and Diamond Springs Road, in the eastbound direction, delay decreased 82 – 85%, saving drivers 0.8 – 1.2 minutes of travel time. In the westbound direction, delay decreased 86 – 93%, saving drivers between 0.7 – 1.1 minutes of travel time.*

# Traffic Signal Retiming Corridors

## Princess Anne Road Upper Implementation

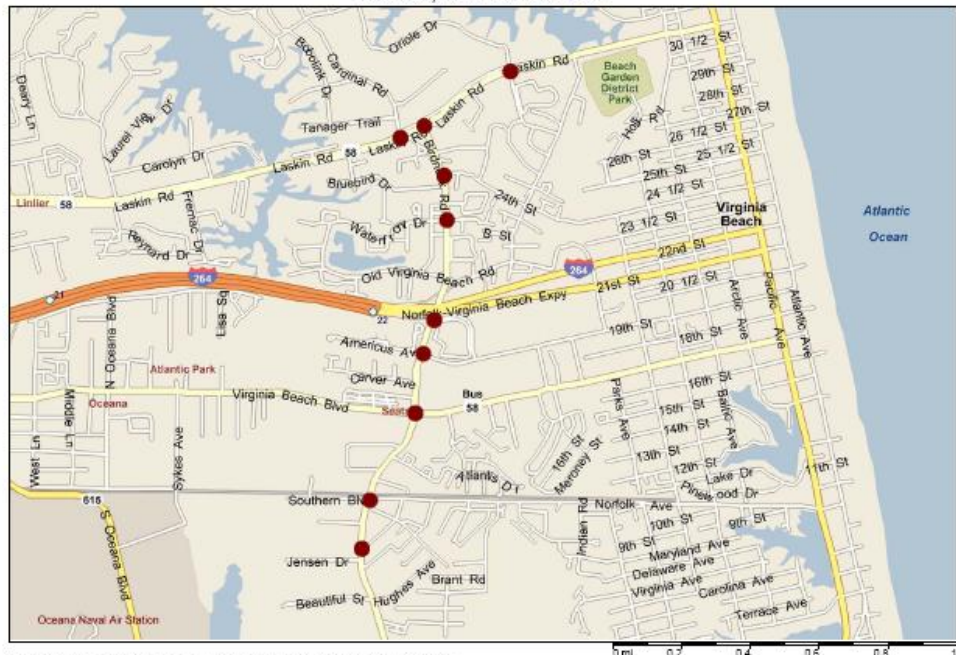
Exhibit 2, Princess Anne - Upper Area



Copyright © and (P) 1998-2008 Microsoft Corporation and/or its associates. All rights reserved. <http://www.microsoft.com/maps/>  
Certain mapping and direction data © 2008 NAVTEQ. All rights reserved. The Data for areas of Canada includes information taken with permission from Canadian authorities, including: © Her Majesty the Queen in Right of Canada, © Queen's Printer for Ontario, NAVTEQ and NAVTEQ ON BOARD are trademarks of NAVTEQ. © 2008 Tele Atlas North America, Inc. All rights reserved. Tele Atlas and Tele Atlas North America are trademarks of Tele Atlas, Inc. © 2008 by Applied Geographic Systems. All rights reserved.

## Birdneck Road Implementation

Exhibit 2, Birdneck Road Area

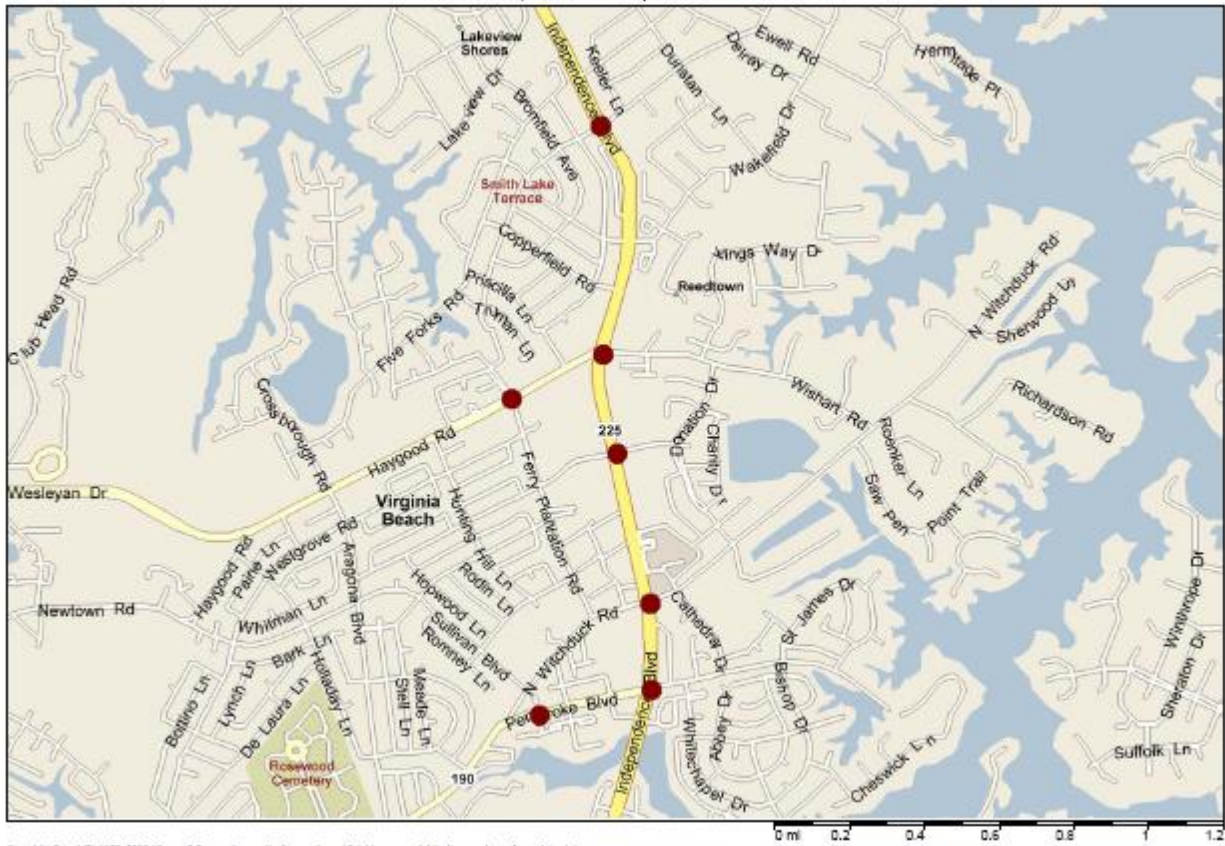


Copyright © and (P) 1998-2008 Microsoft Corporation and/or its associates. All rights reserved. <http://www.microsoft.com/maps/>  
Certain mapping and direction data © 2008 NAVTEQ. All rights reserved. The Data for areas of Canada includes information taken with permission from Canadian authorities, including: © Her Majesty the Queen in Right of Canada, © Queen's Printer for Ontario, NAVTEQ and NAVTEQ ON BOARD are trademarks of NAVTEQ. © 2008 Tele Atlas North America, Inc. All rights reserved. Tele Atlas and Tele Atlas North America are trademarks of Tele Atlas, Inc. © 2008 by Applied Geographic Systems. All rights reserved.

# Traffic Signal Retiming Corridors

## Independence Boulevard (North) Implementation

Exhibit 2, North Independence Area



Copyright © and (P) 1998-2008 Microsoft Corporation and/or its suppliers. All rights reserved. <http://www.microsoft.com/maps>  
Certain mapping and elevation data © 2008 NAVTEC. All rights reserved. The Data for areas of Canada includes information taken with permission from Canadian authorities, including: © Her Majesty the Queen in Right of Canada, © Queen's Printer for Ontario, NAVTEC and NAVTEC ON BOARD are trademarks of NAVTEC, © 2006 Tele Atlas North America, Inc. All rights reserved. Tele Atlas and Tele Atlas North America are trademarks of Tele Atlas, Inc. © 2008 by Applied Geographic Systems. All rights reserved.