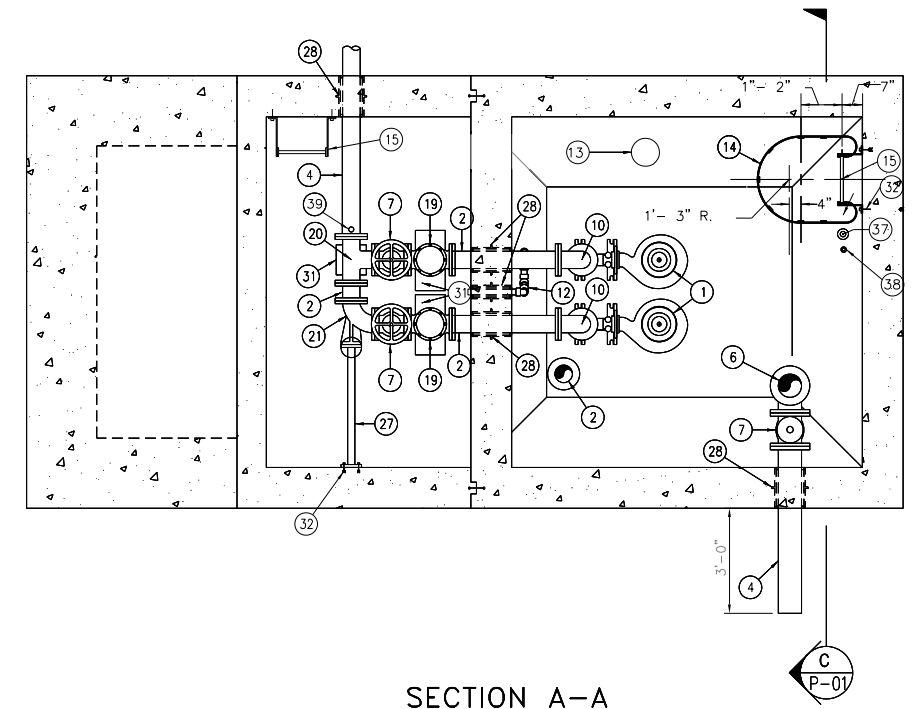
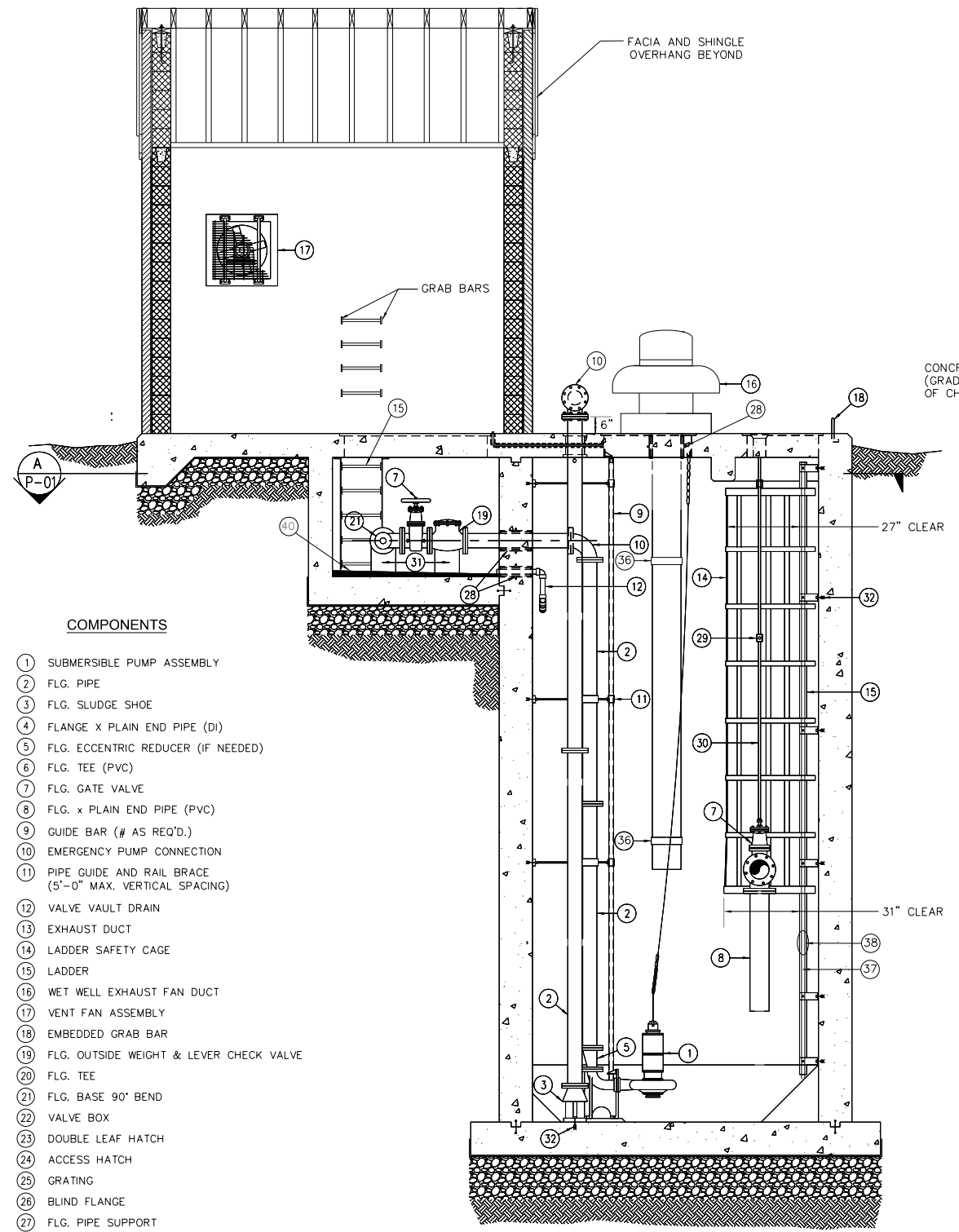


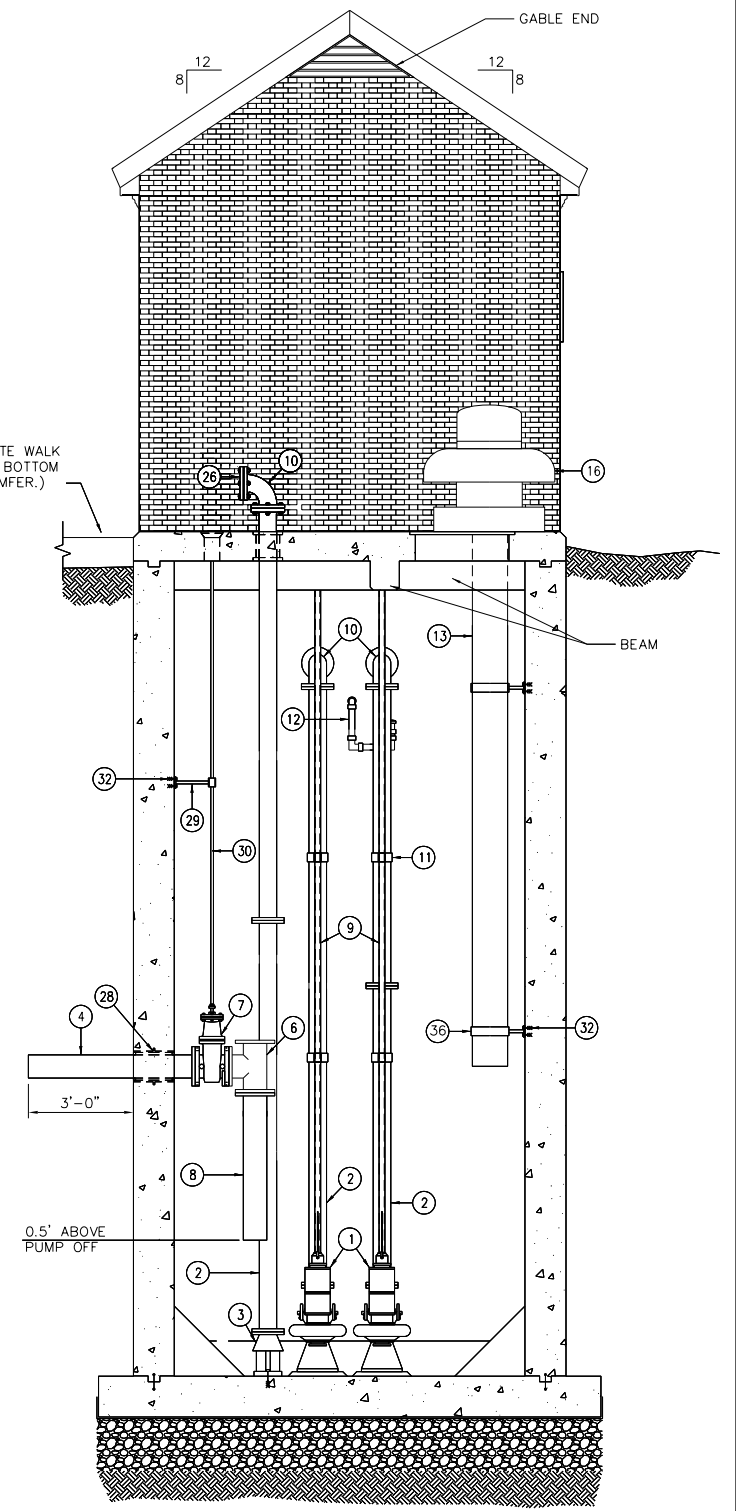
FLOOR PLAN
N.T.S.



SECTION A-A
N.T.S.



SECTION B-B
N.T.S.



SECTION C-C
N.T.S.

- COMPONENTS**
- 1 SUBMERSIBLE PUMP ASSEMBLY
 - 2 FLG. PIPE
 - 3 FLG. SLUDGE SHOE
 - 4 FLANGE X PLAIN END PIPE (DI)
 - 5 FLG. ECCENTRIC REDUCER (IF NEEDED)
 - 6 FLG. TEE (PVC)
 - 7 FLG. GATE VALVE
 - 8 FLG. x PLAIN END PIPE (PVC)
 - 9 GUIDE BAR (# AS REQ'D.)
 - 10 EMERGENCY PUMP CONNECTION
 - 11 PIPE GUIDE AND RAIL BRACE (5'-0" MAX. VERTICAL SPACING)
 - 12 VALVE VAULT DRAIN
 - 13 EXHAUST DUCT
 - 14 LADDER SAFETY CAGE
 - 15 LADDER
 - 16 WET WELL EXHAUST FAN DUCT
 - 17 VENT FAN ASSEMBLY
 - 18 EMBEDDED GRAB BAR
 - 19 FLG. OUTSIDE WEIGHT & LEVER CHECK VALVE
 - 20 FLG. TEE
 - 21 FLG. BASE 90° BEND
 - 22 VALVE BOX
 - 23 DOUBLE LEAF HATCH
 - 24 ACCESS HATCH
 - 25 GRATING
 - 26 BLIND FLANGE
 - 27 FLG. PIPE SUPPORT
 - 28 WALL SLEEVE & LINK SEAL
 - 29 VALVE STEM GUIDE (SS)
 - 30 VALVE STEM EXTENSION (SS)
 - 31 CONCRETE PIPE SUPPORT
 - 32 ADHESIVE ANCHORS (TYP)
 - 33 1" WATER SERVICE W/ VALVE
 - 34 3/4" HOSE BIBB
 - 35 THRESHOLD
 - 36 DUCT SUPPORT (SS)
 - 37 1-1/2" Ø PVC BUBBLER
 - 38 FLOAT ALARM ≥ 1.5' BELOW INFLUENT INVERT
 - 39 1" Ø TAP WITH 3" BRASS NIPPLE WITH BALL VALVE PLUG
 - 40 SLOPE VALVE VAULT FLOOR TO DRAIN

NOTES

1. The information provided presents a generic template of the sewage pumping station type that is preferred by the City of Virginia Beach Department of Public Utilities. The development of a complete design and documents for construction of a facility, based upon this template, shall be totally the responsibility of the Professional Engineer. This template is not suitable for any specific construction purpose, site or application.
2. Structure and component sizes will vary in accordance with the design parameters that are specific to each facility.
3. Refer to the City of Virginia Beach Department of Public Utilities Standard Pump Station Specifications for detailed component descriptions.
4. Refer to the City of Virginia Beach Department of Public Utilities Approved Products List for acceptable manufacturers and products.