



DSC NOTICE #158

***City of Virginia Beach
Planning Department
Development Services Center
April 3, 2009***

Topic: Sanitary Sewer Flow Acceptance Process

Background

Recent concerns identified by the Regional Consent Order from the Department of Environmental Quality (DEQ) and the United States Environmental Protection Agency (EPA), have prompted the localities within the Hampton Roads area to take a closer look at their Sanitary Sewer Flow Acceptance Process. The City of Virginia Beach Department of Public Utilities (DPU) and Development Services Center (DSC) partnered together to create the attached flowchart for projects that require a Request for Hampton Road Sanitation District (HRSD) Certification, HRSD Flow Acceptance Letter, City Flow Acceptance Letter and a DEQ Certificate to Construct (CTC).

The flowchart should be helpful in identifying the steps in the process and the proper sequence of the steps. Due to DEQ reductions in funding and staffing, most of this process has fallen on HRSD and the cities to administer.

When is the Sanitary Sewer Flow Acceptance Process required?

The Sanitary Sewer Flow Acceptance Process is required when **one** of the following criteria for a Flow Acceptance Letter is met:

- Average flow is greater than 40,000 gallons per day (gpd),
- Pumped connection to gravity with average design flows of greater than 2000 gallons per day (gpd),
- Pumped connections to pressurized system, **or**
- Vacuum systems.

Implementation Date: *Effective Immediately*

Contacts:

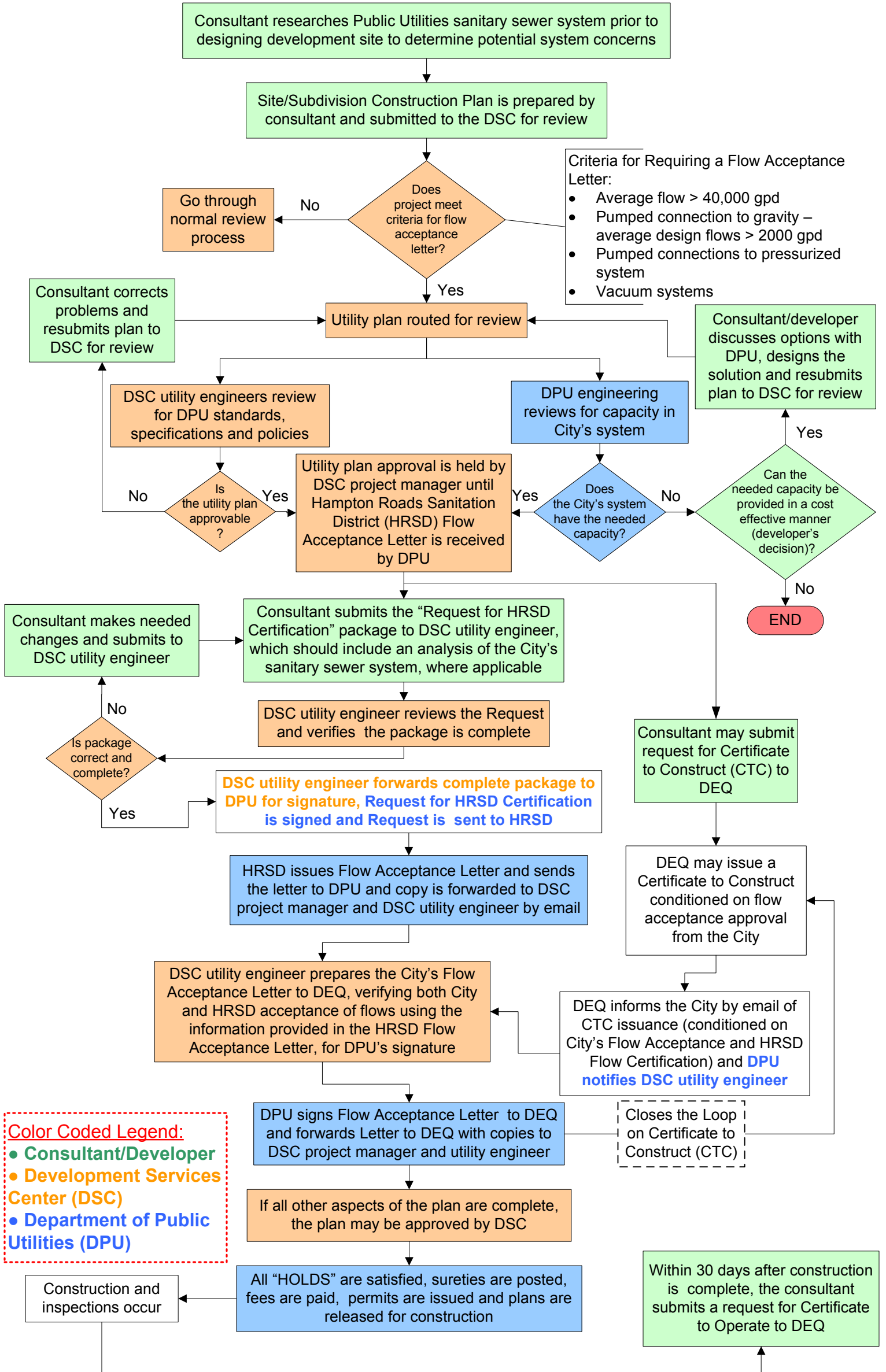
Development Services Center:

Rich Corpus, E.I.T.	rcorpus@vbgov.com	(757) 385-4056
Theresa Holleran, P.E.	thollera@vbgov.com	(757) 385-5655
Arthur Felton, E.I.T.	afelton@vbgov.com	(757) 385-4335

Department of Public Utilities:

Karen L. Possage, E.I.T.	kpossage@vbgov.com	(757) 385-8655
Rebecca Mitchell, P.E.	bmitchel@vbgov.com	(757) 385-8674

Sanitary Sewer Flow Acceptance Process



Color Coded Legend:

- Consultant/Developer
- Development Services Center (DSC)
- Department of Public Utilities (DPU)